



# SES494/598: Close-range Remote Sensing

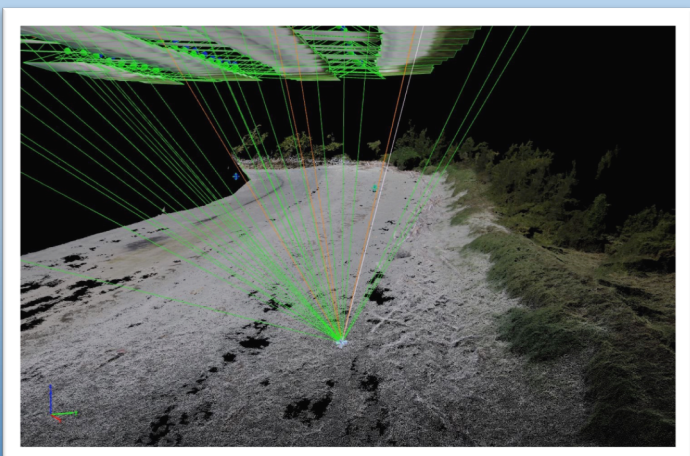
(Spring 2020: 494 #32862, 598 #32863, enrollment limited)

**Interested in near surface remote sensing methods for studying Earth surface processes?**

- *Uncrewed Aerial Systems (UAS), LiDAR, Terrestrial Laser Scanning (TLS), Autonomous Camera Systems (ACS), Structure-from-Motion (SfM) Photogrammetry*
  - *Construction of 3D digital elevation models*
  - *Spatial-temporal landscape change detection*
  - *Quantification of geological or ecological processes*
  - *Hands-on experience & research skills!*

Course consists of in-class lectures/seminars, hands-on labs, local field trip and a group project

- Th. 0900-1200 PSH460
- Permission of instructor, enrolment limited
- Background in Earth sciences (geomorphology, geology, ecology, etc.), remote sensing or GIS preferred



**Prof. Ian J. Walker**  
[ianjwalker@asu.edu](mailto:ianjwalker@asu.edu)

Schools of Earth & Space Exploration and Geographical Sciences & Urban Planning

**Lectures: PSH460**

**Th. 0900-1200**